

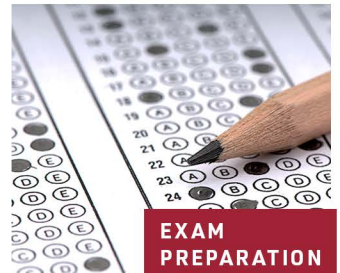
PURSUE YOUR FUTURE.

**Temple
University**
Real Estate Institute

WHO WE ARE

The Temple Real Estate Institute is the largest program for professional Real Estate education in Greater Philadelphia. Our courses prepare real estate salespeople, brokers, appraisers and property managers, as well as people simply interested in expanding their real estate knowledge.

WHAT WE OFFER



SALESPERSON LICENSING

Register and complete the two required courses: ***Real Estate Fundamentals*** and ***Real Estate Practice***. The total pre-licensing course requirement is 75 hours. Tuition for each course is due upon registration. Both pre-licensing courses must be completed prior to taking and passing the Pennsylvania State Real Estate Salesperson Exam. Once you pass the exam, you may apply for your Real Estate Salesperson's License through any PA Real Estate Broker.

REAL ESTATE FUNDAMENTALS

This introductory course takes a fundamental approach in assisting the beginning real estate student with lectures on a variety of topics in the industry. All basic real estate terminology and techniques are introduced and explained. Designed for prospective real estate salespersons and individuals seeking practical real estate knowledge.

REAL ESTATE PRACTICE

This second part of a two-course sequence prepares the prospective real estate professional with background for the Pennsylvania State Licensing Examination. Includes appraisal, listing real estate, qualifying buyers, showing properties, presenting offers, real estate mathematics, property management, investment and more.

BROKER LICENSING

A Real Estate Salesperson/Licensee must work in the real estate business a minimum of 3 years while completing 240 hours of required broker approved courses prior to taking and passing the PA Real Estate Broker's exam. All of our broker courses are approved by the PA Real Estate Commission for both broker credit and also meet the full CE course requirements for license renewal.

EXAM PREPARATION

Reduce test-taking anxiety and increase your test-taking skills by learning a variety of strategies and techniques with our ***RE Salesperson Licensing Exam Prep*** for the PA Real Estate Salesperson and Broker Exams. Review key topics from Modern Real Estate Practice in Pennsylvania at the in-person exam prep class.

ONLINE SELF-PACED COURSES

Earn your Real Estate salesperson license at your own pace with the two required courses, ***Real Estate Fundamentals*** and ***Real Estate Practice***, available online in an asynchronous format.